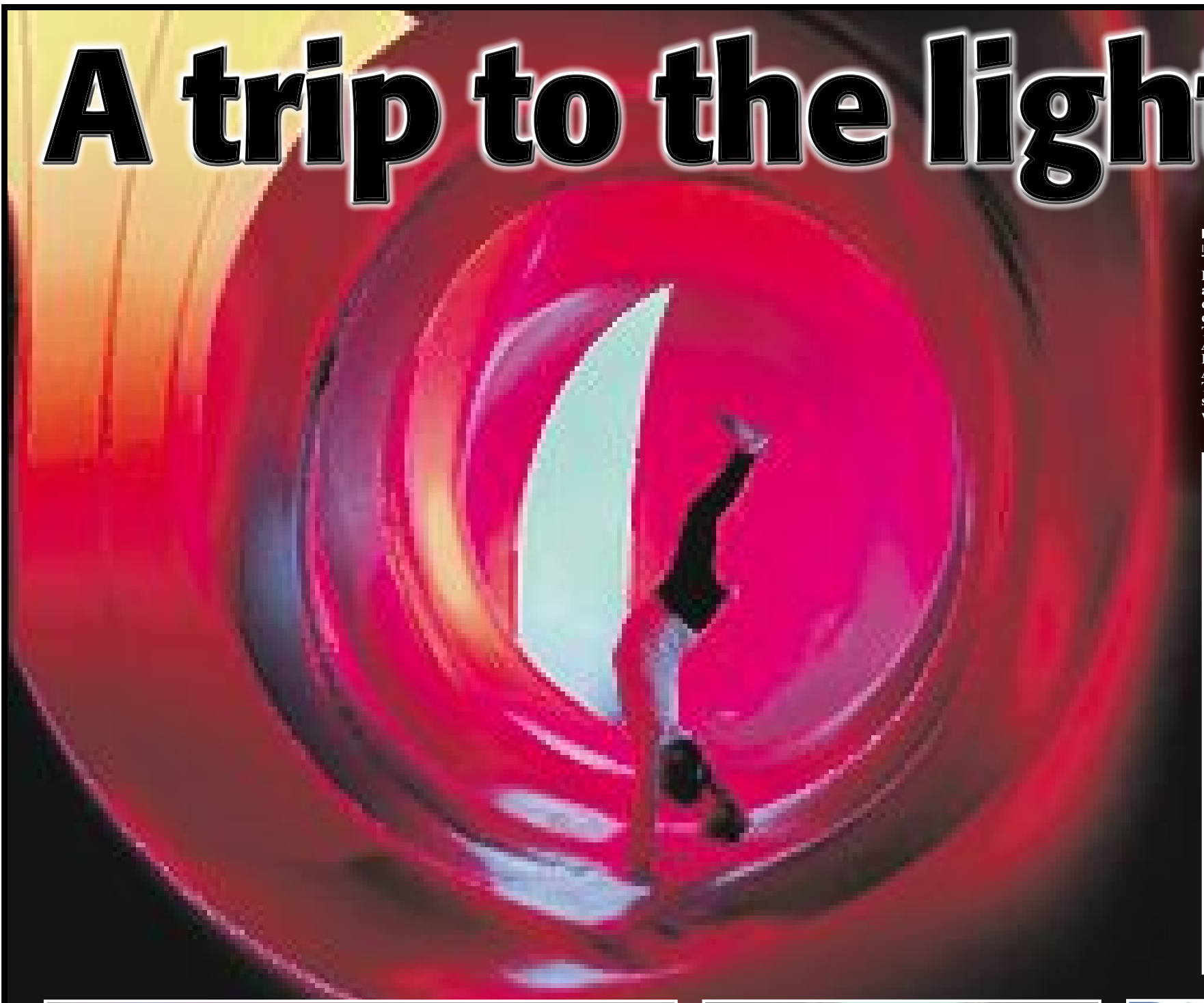


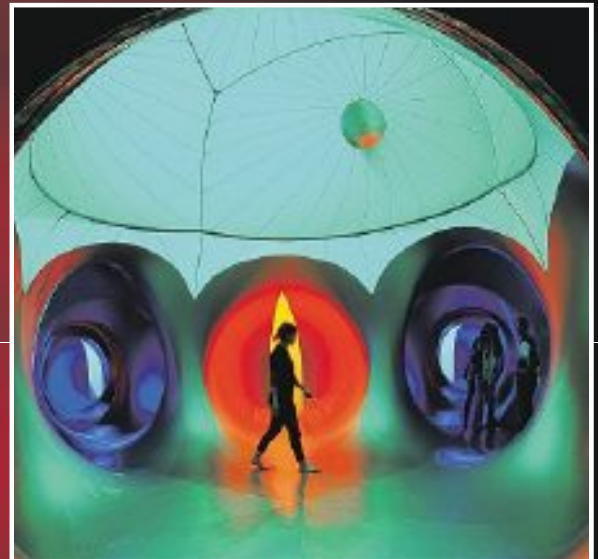
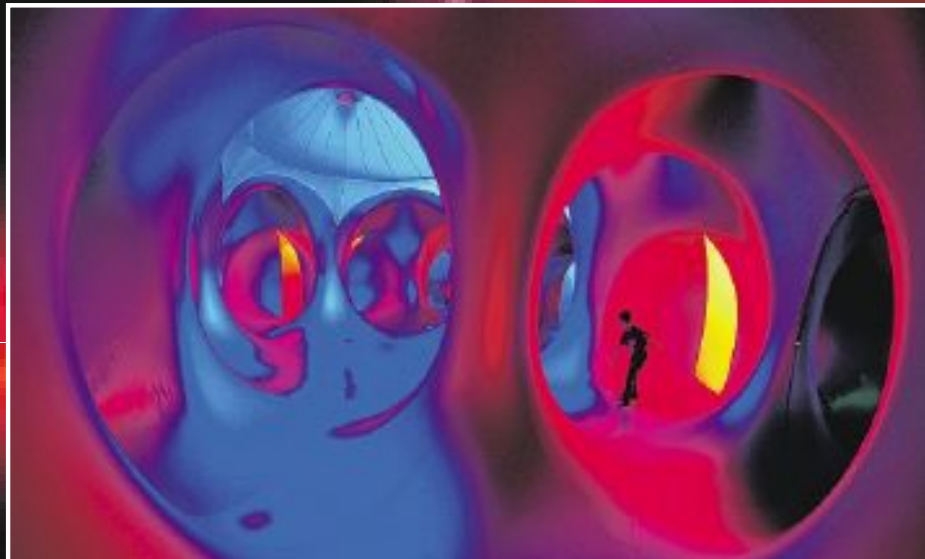


PRESTON GUILD 2012

A trip to the light



R
le
P
a
c
T
A
P
A
T
s
v



PRESTON GUILD 2012

ht fantastic

by **LAURA WILD**

laura.wild@lep.co.uk

HUNDREDS of people passed through an inflatable wonderland of light and colour as part of this year's Guild celebrations.

The Luminarium, created by Architects of Air, was at Frenchwood Recreation Ground, on Lawrence Avenue, at the weekend.

The collection of huge, multi-coloured sculptures were set out on the rec for visitors to wander around and explore.

The luminaria also featured 'pods' where people could sit and relax out of the way of the other visitors.

Inspired by Islamic architecture, Archimedean solids and Gothic cathedrals, the inflatable structures are designed by Architects of Air founder Alan Parkinson who first began experimenting with pneumatic sculptures in the 1980s.

People both young and old enjoyed the inflatables, which offered a sense of wonder at the beauty of light and colour, as they explored a maze of

winding paths and domes. Vivid reflections of liquid colour spilled across the curved walls creating a world apart from the normal and everyday.

Visitors were able to wander freely or just lay back and enjoy the ambience of the structure.

Architects of Air tour six Luminaria - Exxopolis, Miracoco, Mirazozo, Amococo, Levity III and Levity II. But it was their largest - the 1,000 metre square Amococo structure - which was in the city.

